

FAST INTERNATIONAL LOGISTICS W.L.L

فاست انترناشونال لوجستكس ذ.م.م



Company Profile

FAST INT. LOGISTICS W.L.L has proven track record of successfully executing major transport and lifting operations of heavy and over dimensional cargoes for various projects in the State of Qatar since 2016.

Safe and professional operation has been the hallmark of our project logistics team. Our long and successful stride in the field of project logistics is achieved by the technical expertise and dedicated team work of our staff and management committed to provide top quality services to our clients and contribute in the progress of the nation.

Technical expertise, dedicated team work and professionalism have been our key strengths and the reason for our long and successful stride in the field of project logistics. Among the many project sectors, our clients from industries like Electric Substations, Power Plants, Desalination Plants, Pipe Lines, Refineries, Railways, Airport, Cement Plants, Small Scale Industries have received our services in air and sea freights, customs clearance, transportation of normal, over-dimensional and over-weight goods and associated services like loading, unloading, installation, packing, warehousing, survey, insurance etc.

The Staff and management of Fast Logistics project team endeavors to provide, safe, timely, cost efficient and professional solution for the movement of valued heavy lift cargoes of all our esteemed clients.

Vision

To be the business leader in the field of supply chain and logistics, delivering superior value to all its stakeholders.

Mission

To become one of preferred supply chain logistics company in the region by creating value for all stakeholders – by delighting customers, motivating employees, having enlightened business associates, and satisfying government authorities and society through:

Know- How

- Enhancement of our knowledge base
- Proficiency in every function
- Excellence in core competencies



Value to the Customer

- Anticipation of customer needs
- Innovative Solutions
- High Quality of Services

Delivering Results

- Shareholder Value
- Clear Objectives
- High Standards

Continuous Improvement

- Learning Organization
- Willingness to change
- Rise to challenges

Corporate Social Responsibility

- Safety First
- Sustainable Development
- Stakeholder Engagement

Within the context of its values, FL nurtures a culture of collective ambition and collaboration, while encouraging individual accountability for the achievement of common goals. At the same time, FL honors mutual trust and respect among one and all.

Core Values

- **Integrity:** **FAST** will work constantly to earn the respect and trust of all parties that it interacts with, by acting fairly and honorably. **FAST** will observe high ethical standards and obey all laws and regulations.
- **Commitment:** On the foundation of commitment to quality, **FAST** will do all that is needed to deliver value to all stakeholders. In the process, being accountable for its own actions and decisions, those of the team and the organization for which **FAST** is responsible.
- **Excellence:** **FAST** is committed to excellence in all of its activities. **FAST** values innovation, creativity and intends to maintain a position of leadership in each of its industries.
- **Speed:** **FAST** will respond to internal and external customers, and other stakeholders with a sense of urgency. Concern for society: **FAST** will be responsible for the safety and environmental impact of its operations, services and products.

Towards this, the company has plans to invest in resources and improve its policies, system and procedures to provide world class logistics solutions to its customers.

State of Qatar is well known in the region and worldwide for her rich cultural heritage, centuries old history of pearl fishing, grand remnants of ancient forts and buildings, hospitable people, economic stability, oil and gas wealth and the safe and promising environment it offers to both nationals and expatriates for working and setting up business and industries and venture into projects in various sectors.

It is estimated the country holds reserves of up to 15 billion barrels of oil and is the world's third largest holder of natural gas reserves.

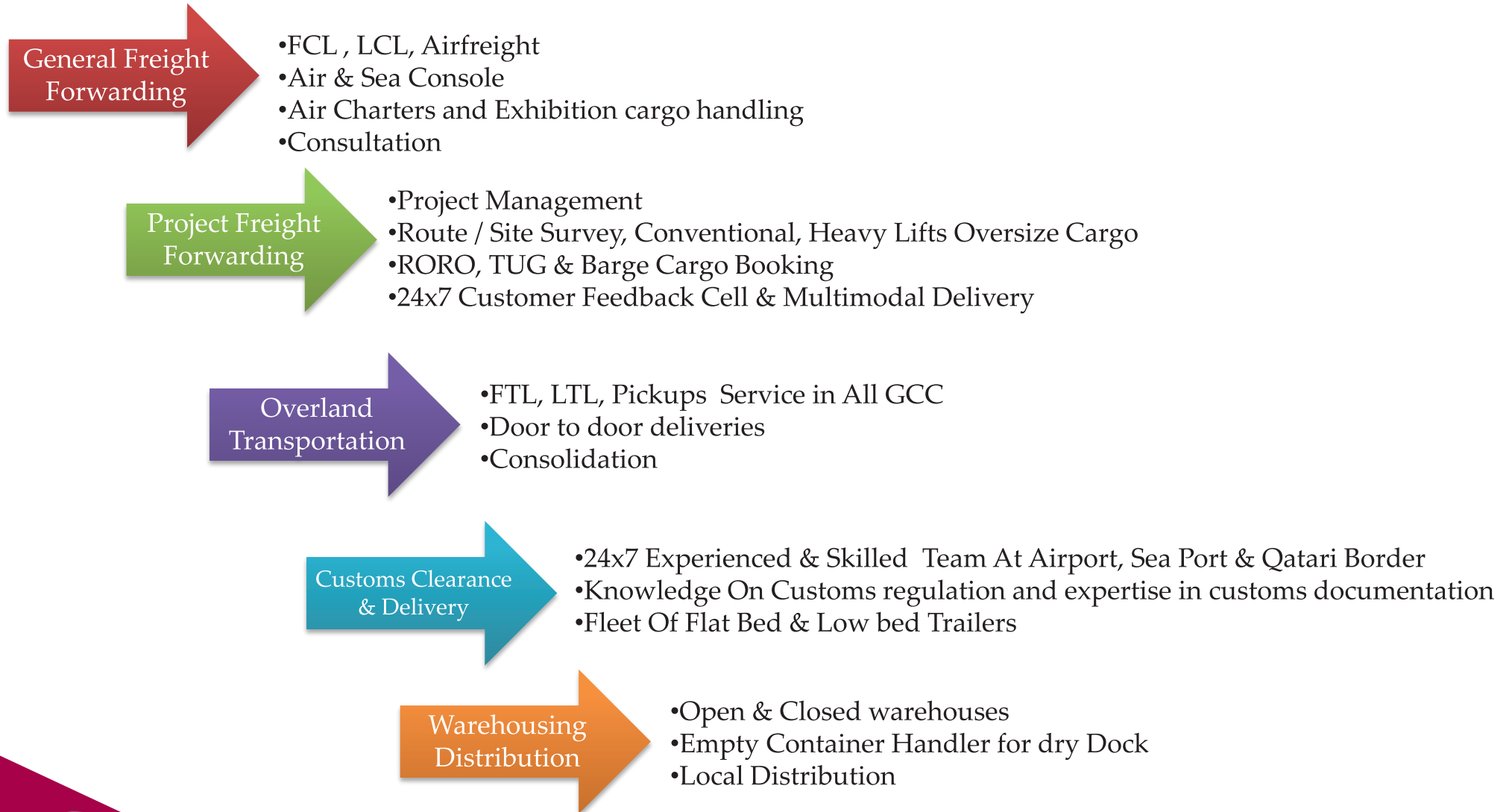
Qatar, the global leader in LNG production and distribution.

In addition to the growth of oil and gas industry, great emphasis is given by the Government of Qatar towards development of Small and Medium scale industries for further strengthening and diversification of the economy and providing employment opportunities to the nationals and expatriates.

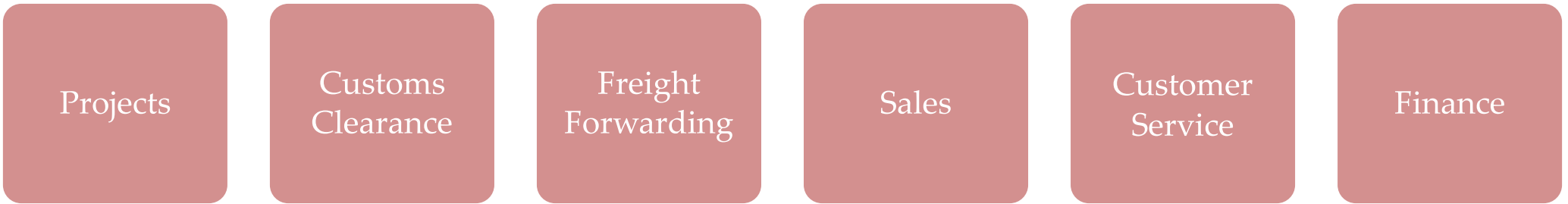
Qatar is one of the leading producers and exporter of petrochemicals eg. LDPE/HDPE, aluminum and high quality steel.

Qatar is appointed to host the 2022 FIFA World Cup Football tournament, in this regard has intensified their spending in infrastructure, stadiums, development of the hotel and tourism industry, Qatar Rail and other facilities for grand organizing of this prestigious sporting event.

SERVICES AND PRODUCTS



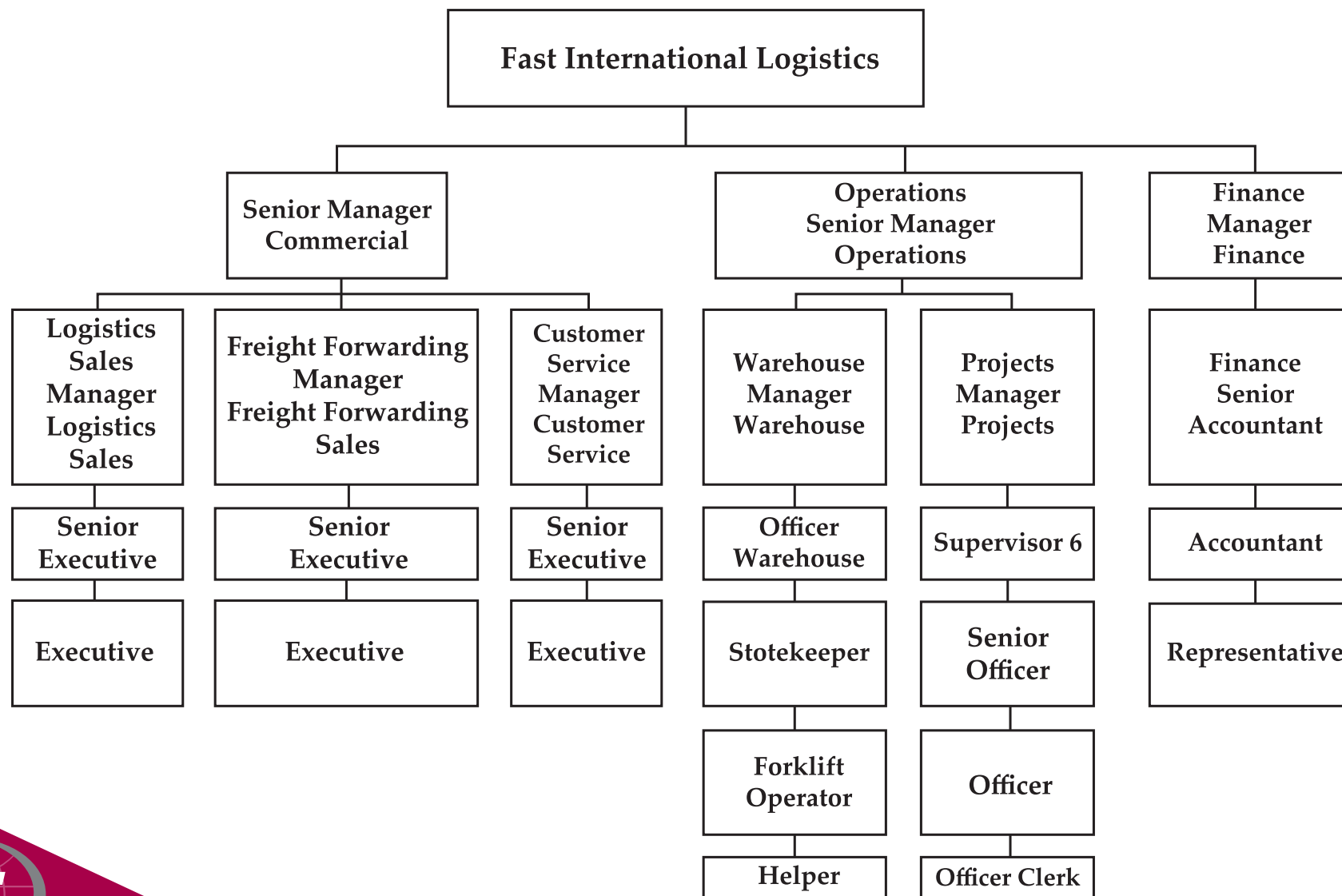
DEPARMENTS



OUR STRENGHTS



ORGANIZATION CHART



Project Logistics

- Complete Working Knowledge On Local Procedures
- Advance Logistics Planning for OD (Out of Dimension) Cargo, Heavy Lifts including Route & Site Survey
- Preparation Of Method Statement, Risk Safety Analysis & Schematics Loading Drawings
- Report Management
- Single Focal Point to Client

Logistics Support Offered to Clients in Different Sectors of Industries Like:

- Oil & Gas
- Infrastructure
- Construction
- Pipeline
- Power
- Transport
- Retail Logistics

LONG TUBE IN CASES

Transportation of 26 meters long titanium and aluminum brass tubes from Doha port to site at Ras Abu Fontas for QEWC F-039 RAF A2 Desalination Project.



Receiving of tubes from vessel hook at Doha port and reloading on trailer at Doha port laydown yard for transportation to Ras Abu Fontas



POWER TRANSFORMERS



Locking of transformer wheel on the center line of the foundation by nuts and bolts



Lifting power transformer from trailer by mobile crane

PROJECT EXPERTISE



OVER DIMENSIONAL VESSELS



MSPM with HDS Reactor entering site



MSPM with HDS Reactor positioned near lifting
area for installation at site

PIPES

Lifting and transport operations of gas and liquid supply pipes.



Trailers with gas pipes on steel cradles lined up outside laydown site in Dukhan for unloading



Being unloaded by crane using teflon coated pipe hooks



PIPES



DI pipes being loaded into container



DI pipe bundles being loaded into container

DEL - Export Gas Compression Facilities Upgrade Project – Ras Laffan



HRSG Modules	: 4.48 M x 5.20 M x 4.70 M - 71 Tons
GT Skids	: 15.00 M x 5.20 M x 4.30 M - 68 Tons
Compressors	: 13.00 M x 4.50 M x 4.50 M - 99 Tons



Information On Ports In Qatar



HAMAD PORT



New port project facts: - became operational end of 2016

The new port site stretches over 26 KM².capacity of multi-use terminals:

General cargo	: 1.7 Million tonnes per year
Grain facility	: 1 Million tonnes per year
Vehicle terminal	: 500,000 Vehicles per year
Livestock	: 37,500 Tonnes per year
Container terminal	: Capacity to handle 2 Millions TEU's P.A.

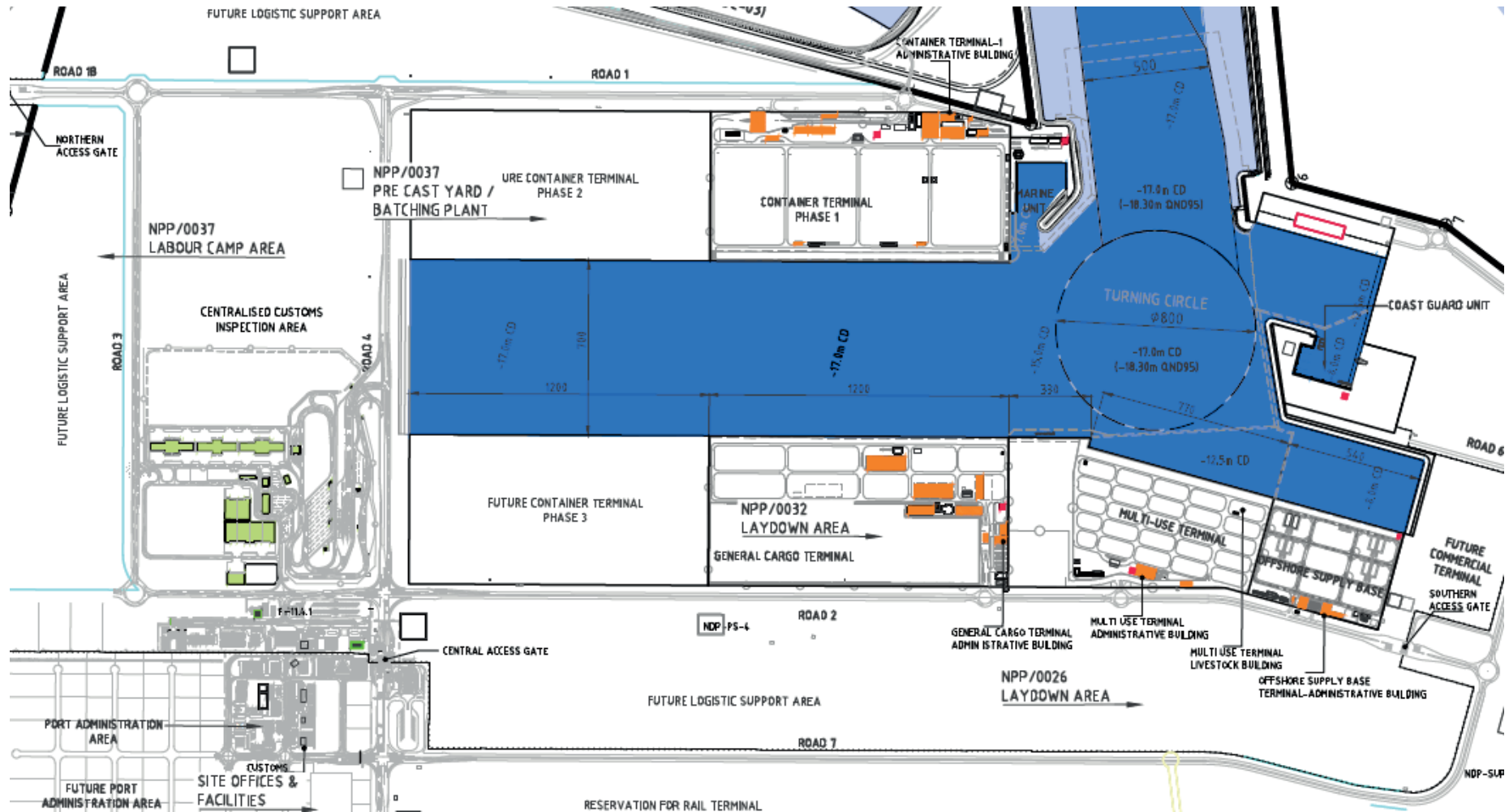


Hamad Port

The port basin is approximately 3.8KM in length, 700M wide and 17M deep. In total, 70 Million M³ of granular material will be excavated; enough to fill 25,000 Olympic-size swimming pools.



HAMAD PORT LAYOUT



MESAIEED INDUSTRIAL PORT OF QATAR



**DISCHARGE OF CEMENT /
AGGREGATES / PROJECT
CARGO**

**LOADING FOR
PETROCHEMICALS
PRODUCTS, UREA,
SULPHUR, ALUMINUM /
STEEL PRODUCTS**

RAS LAFFAN PORT

Berth No	Max. draft	Pier strength
CB 101 (Sulphur/Cement berth)	12.5MTRS	N/A
CB 102 (DRY CARGO BERTH)	12.5MTRS	3MT PER SQ.MTRS
CB 103 (DRY CARGO BERTH)	12.5MTRS	3MT PER SQ.MTRS
CB 104 (RO-RO BERTH)	7.5 MTRS	5MT PER SQ.MTRS
CB 105 (DRY CARGO BERTH)	8.5MTRS	3MT PER SQ.MTRS
CB 106 (DRY CARGO BERTH)	8.5MTRS	3MT PER SQ.MTRS
CB 107 (RO-RO) BERTH	8.5MTRS	3MT PER SQ.MTRS



Al-Ruwais Port

Al-Ruwais Port is the second commercial port. Located at the northern tip of Qatar.

- The port handles general cargoes, foodstuff and other commodities.
- Suitable as gateway for fresh frozen and commodities from neighboring countries.
- Channel depth : 5 meters
- New docks are built at 7 meters depth.
- 6 marine berths constructed at a combined total length of 1414 meters.
- The navigation channel and port docks will be further expanded and dredged to reach 10 meters depth during the final stage of Al-Ruwais Port upgrade project. This will facilitate the entry of all small and medium ships and cruise ships.



Thank You

The bottom left corner of the slide features two overlapping geometric shapes: a dark red triangle pointing towards the bottom right, and a light gray triangle pointing towards the bottom left, partially overlapping the red one.



Address: C- Ring Road - Zone: 42 - St 230 - Alattiyah Building- No: 181 - 2nd Floor
Tel : +974 44681677 - Fax : +974 44692373 - P.O.Box: 93135, Doha - Qatar
E-mail: info@flqatar.com - www.flqatar.com